

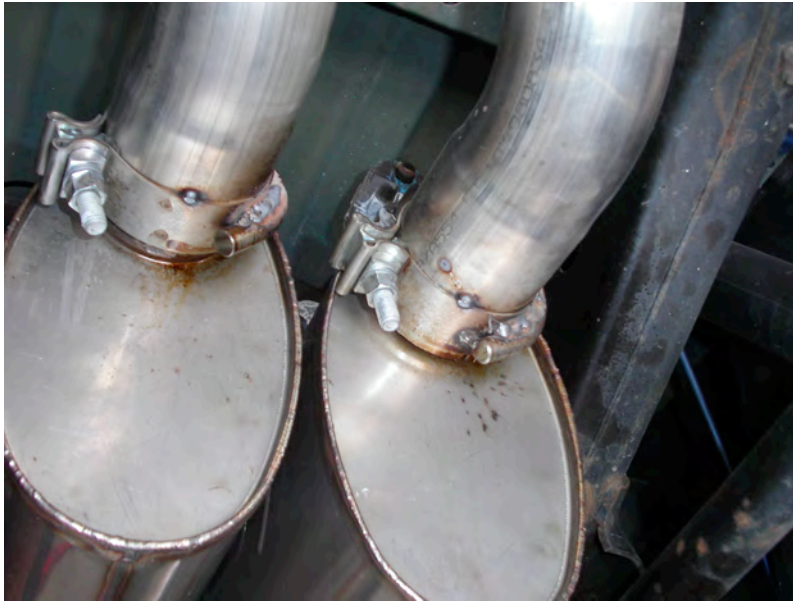


09-18 DODGE RAM TRUCK CATBACK INSTALLATION INSTRUCTIONS

Thanks for purchasing a Stainless Works Catback Exhaust System for your 09-18 Dodge Ram Truck. The Catback for headers version comes with an X-pipe, while the Catback to factory connection point comes with a Y-pipe. We have worked extensively to make sure that our exhaust systems fit and sound great. Please follow these steps to ensure that your installation goes as planned.

1. Stainless Works recommends the use of Hi-Temp RTV sensor safe silicon gasket maker as an option to or in conjunction with the use of factory gaskets. The recommended Oxygen Sensor Safe RTV is either Valco All-in-One Aluminum or Permatex Copper P/N 101BR available at NAPA, Autozone and other retailers.
2. Disconnect the battery before starting work on the exhaust system for your vehicle. Reconnect the battery when the job is completed.
3. Your exhaust system can be installed by a weekend warrior but the use of a lift is recommended for ease of installation. If using a jack, the vehicle must be placed on a level hard surface and jack stands are required for safety reasons.
4. You will assemble the components together as specified below, but only snug the clamps as you move along from front to back. When placing the X-pipe into position, make certain that you push it fully forward and level it in with the vehicle. After aligning all the components in the vehicle, you will tighten all the clamps working from front to back of the vehicle.
5. Remove tailpipes from hangers and muffler outlets.
6. Loosen clamp in front of muffler and remove muffler from hangers.
7. Remove muffler.
8. Note: In the instructions below, you may need to replace the word "Y-pipe" with the word "X-pipe, depending on which system you ordered. (Systems that fit up to Stainless Works headers have an X-pipe, while system that fit up to the factory connection point have a Y-pipe.)

9. Install Y pipe using 3" clamp (Two 3" clamps for the X-pipe).
10. Install right and left muffler inlets using (2) 3" clamps.
11. Install mufflers to muffler inlets using (2) 3" clamps (with outlets at the top).
12. Install right tail pipe to muffler using 3" hanger clamp.
13. Install left tail pipe to muffler using 3" hanger clamp.



14. Install mid 3" hanger clamp to left tailpipe



15. Install the two remaining 3" hanger clamps- one on each tailpipe.



16. Insert clamp hangers into rubber hangers.

17. Install tips using (2) 3" clamps.

18. Tighten from front to back adjusting as needed

19. Be sure to have adequate clearance around all wires, hoses and lines. **If anything is in contact with the exhaust system, it will melt.** Make sure to have at least 1/2" of clearance and wrap any suspect areas with DEI thermal barrier wrap.

20. After double checking for clearance and making sure all lines, wires and hoses are secured, drive the car for 10-20 miles and re-check all clamps and clearances. Your system may be tack welded at the joints/ clamps to reduce shifting of the system during heating and cooling cycles. Make certain to disconnect the battery before performing any welding.