

# STAINLESS WORKS

## 2022+ FORD MAVERICK

### CATBACK INSTALLATION INSTRUCTIONS

Thanks for purchasing a Stainless Works catback exhaust system for your 2022+ Ford Maverick. Our team has worked to ensure that this product is the premium in performance, quality, and fitment. We are proud to say that this system will unleash the true character of your vehicle. We encourage you to read through the following steps, and check the included Bill of Materials before beginning. Please follow these steps to ensure that your installation goes as planned.



**2022+ Ford Maverick  
(FMAVCB)**

**a.**

Disconnect the battery before starting work on the exhaust system for your vehicle. Reconnect the battery when the job is completed.

**b.**

Your exhaust system can be installed by a weekend warrior but the use of a lift is recommended for ease of installation. If using a jack, the vehicle must be placed on a level hard surface. Jack stands are required for safety reasons.

**c.**

You will assemble the components together as specified below, but only snug the clamps as you move along from front to back. After aligning all the components in the vehicle, you will tighten all the clamps working from front to back of the vehicle.

SW101  
V01 - 4.5.23

**DISASSEMBLY**

1. Disconnect the battery.
2. Raise and support the vehicle.
3. Loosen the clamp behind the factory flex pipe and remove the bolt. (16mm nut)
4. Support the exhaust and remove the 3 rubber hangers. Once this is done the factory exhaust can be removed.
5. Remove the factory tail hanger bracket located behind the rear bumper (x2 10mm bolts)
6. With the factory exhaust removed lay it on the ground as it sits on the vehicle. Locate the weld at the tail of the secondary cat. From here measure out 3 inches and mark the tube.
7. Using your mark from step 6, make a straight cut through the tube and debur the end of the secondary cat.



*Detail 3: reference picture of factory clamp.*



*Detail 6: how to mark out your cut.*



*Detail 7: a properly cut secondary cat*



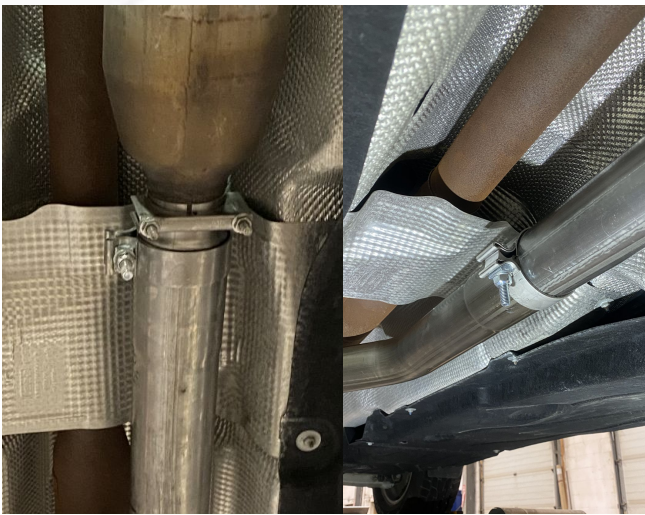
*Detail 5: location of the bolts to remove the factory hanger bracket.*

SW101  
V01 - 4.5.23



**ASSEMBLY**

8. Re-install the secondary cat using the factory clamp and hardware.
9. Replace the 2 remaining factory soft rubber hangers with the black grommets provided.
10. If connecting to a SW performance downpipe you can skip this step. Install the factory connect adapter to the cut end of the secondary cat using the 2.5" saddle clamp.
11. Install the muffler inlet using a 3" clamp.
12. Install the special wire hanger into the first rubber grommet and slip the clamp end onto the muffler inlet.
13. Install the muffler using the previously installed hanger clamp.
14. Install the muffler outlet using a 3" clamp and rubber grommet



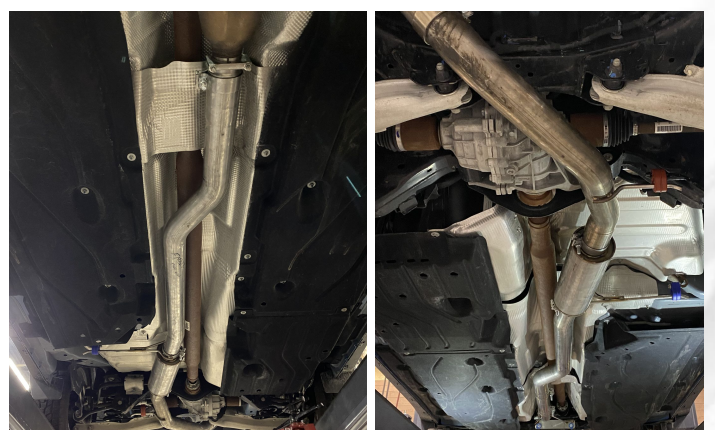
*Detail 3: SW factory VS performance connection*



*Detail 5: SPECIAL WIRE HANGER installed*



*Detail 7: muffler outlet installed w/ clamp/hanger*



*Reference for proper catback alignment*

SW101  
V01 - 4.5.23



## ASSEMBLY CONT.

★ The next steps taken will depend on what tail system you choose.

A- dual tip tail, B-high clearance tail

### A. Dual Tip Tail.

- a. Install the DT tail using a 3" clamp
- b. Using the supplied 3/8 washer, M8 bolt/nut, and blue grommet loosely install SPECIAL HANGER DT as shown.
- c. Before putting it on the vehicle, install 789250 tips onto the staggered Y-tip using 2.5" clamps.
- d. Install the staggered Y-tip using the SPECIAL HANGER DT.
- e. Adjust and tighten the system from front to back.

### B. High clearance tail

- a. Install the HC tail using 3" clamp
- b. Slide SPECIAL HANGER HC over the end of the tailpipe and install using a blue grommet and M8 bolt.
- c. Install 788300 tip using 3" clamp.
- d. Adjust and tighten from front to back.



Detail A-b: SPECIAL HANGER DT installed



Detail A: DT tail assembly installed



Detail B-b: SPECIAL HANGER HC installed



Detail B: HC tail assembly installed

SW101  
V01 - 4.5.23



**STAINLESS WORKS**

visit us online  
StainlessWorks.net

call toll-free  
800.878.3635

connect with us

