



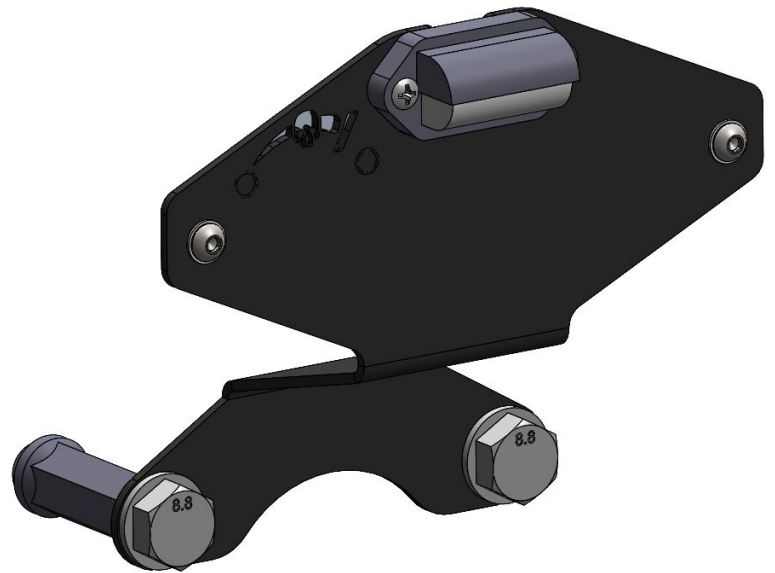
## 22+ FORD BRONCO RAPTOR

### LICENSE PLATE RELOCATION BRACKET INSTALLATION INSTRUCTIONS

FLR02

Thanks for purchasing a Reaper Off-Road license plate relocation bracket for your 22+ Ford Bronco. Our team has worked to ensure that this product is the premium in performance, quality, and fitment. We are proud to say that this product will enhance the look and off-road performance of your vehicle. We encourage you to read through the following steps, and check the included Bill of Materials before beginning. Please follow these steps to ensure that your installation goes as planned.

Our products are specifically designed with ease of installation in mind. However, if you are uncomfortable with the following instructions please seek professional assistance. Reaper Off-Road will not be held liable for harm or injury to yourself or your vehicle during installation or use of this product.



#### **Recommended Tool List**



- Metric socket set
- Inch socket set
- Hex key set
- Breaker bar or long handle ratchet
- Screwdriver

R1033  
V01 - 6.21.23



Visit us online:  
[ReaperOffRoad.com](http://ReaperOffRoad.com)

Call Us Toll-Free:  
844-868-3022

 [reaper.off.road](https://www.instagram.com/reaper.off.road)  
 [Reaper-Off-Road](https://www.facebook.com/Reaper-Off-Road)

## DISASSEMBLY

Steps may vary depending on trim level and optional equipment.

1. Remove the license plate from the current location.
2. Remove the top two lugs from your spare tire.

## ASSEMBLY

3. Install (2) extended lug nuts (J) to secure the spare tire. Use a 19mm lug socket or deep socket to secure.
4. Accent plates should be painted in advance if you choose to do so. Install the logo accent plate using the provided 1/4" nuts - (2)I. Use a 7/16" wrench to secure.
5. Install the provided license plate light. Use the provided #10 hardware - (2)A, (2)E, (2)H. Use a Phillips screwdriver and a 3/8" wrench to secure.
6. Install license plate to the bracket. Use the 1/4" hardware - (2)B, (4)F, (2)I. Use a 7/16" wrench and a 5/32" hex key to secure.
7. Install the bracket to the extended lug nuts using the 14mm hardware - (2)C, (2)G. Use a 22mm socket to secure.

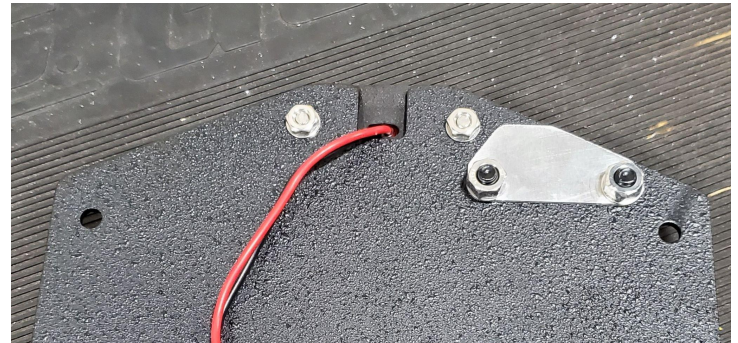
Some wheel offsets will require the use of spacers for proper mounting. If your license plate or mount is hitting the wheel, remove the bracket and install (2) spacers(K) behind the bracket. Use (2) washers(G) with the longer 14mm bolts(D) to secure.

8. Use your preferred method to connect wiring (not included) from OEM license plate light location to the new location. We recommend routing the wiring alongside the camera wiring, into the rear door towards the hinge, and back across the vehicle to the OEM location.

# 22+ FORD BRONCO RAPTOR

## LICENSE PLATE RELOCATION BRACKET

PAGE 2



Detail 5: Accent plate and light installed



Detail 8: Installation complete

R1033  
V01 - 6.21.23