



21+ FORD BRONCO

SIDE RAILS INSTALLATION INSTRUCTIONS

FSR01, FSR02

Thanks for purchasing a set of Reaper Off-Road side rails for your Bronco. Our team has worked to ensure that this product is the premium in performance, quality, and fitment. We are proud to say that this product will enhance the look and off-road performance of your vehicle. We encourage you to read through the following steps, and check the included Bill of Materials before beginning. Please follow these steps to ensure that your installation goes as planned.

Our products are specifically designed with ease of installation in mind. However, if you are uncomfortable with the following instructions please seek professional assistance. Reaper Off-Road will not be held liable for harm or injury to yourself or your vehicle during installation or use of this product.



Recommended Tool List



- Socket set - Inch
- Socket set - Metric
- Ratchet
- Wrench set - Inch

R1027
V01 - 8.26.22



Visit us online:
ReaperOffRoad.com

Call Us Toll-Free:
844-868-3022

 [reaper.off.road](https://www.instagram.com/reaper.off.road)
 [Reaper-Off-Road](https://www.facebook.com/Reaper-Off-Road)

DISASSEMBLY

Steps may vary depending on trim level and optional equipment.

- A1.** If equipped, unbolt factory rails by using a 13mm socket to remove the mounting bolts. There will be (4) bolts per side on a 2 door, and (6) bolts per side on a 4 door.

ASSEMBLY (without drop brackets)

The steps below are based on a 4 door installation. Quantities will be slightly lower for 2 door vehicles.

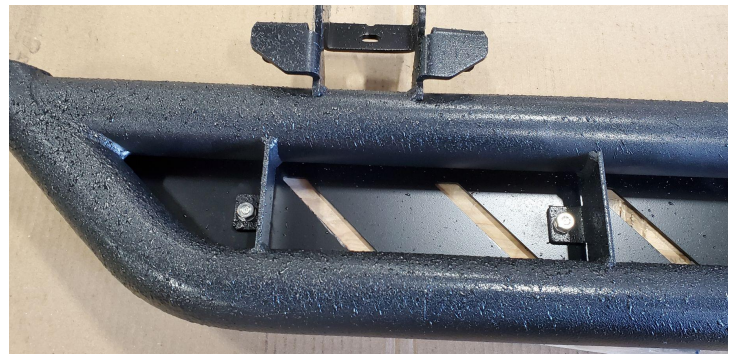
This product includes accent plates that can be customized to the color of your choice or left as is.

If you would like to paint or powder coat the plate, do so before continuing.

- B1.** Lay out the pieces and separate driver side vs passenger side. The majority of the tabs on the braces inside the rails point towards the front of the vehicle. The top plates are side specific and will have the Reaper logo towards the back of the vehicle.
- B2.** Assemble the top plates to the matching rails. Make sure the threaded studs drop through the tabs. Secure each side with (6) washers(C) and (6) nuts(E). Tighten with a 7/16" socket.
- B3.** Install the accent plates to the studs on the top plates. Secure at each side with (2) washers(C) and (2) nuts(E). Tighten with a 7/16" socket.
- B4.** With the help of a friend, lift the driver side rail up into position on the driver side of the vehicle. The mounting brackets will slide around the pinch weld.
- B5.** Install (3) M10 bolts(B) and (3) washers(D) to secure the brackets to the vehicle mounting points. Do not fully tighten yet.
- B6.** Secure the brackets to the pinch weld by installing (6) 1/4" screws(A), (12) washers(C), and (6) nuts(E). Do not fully tighten yet.
- B7.** Now that all hardware is installed on this side, fully tighten the M10 hardware using a 17mm socket then fully tighten the 1/4" hardware using a 7/16" socket and a 7/16" wrench.
- B8.** Repeat the above steps for the passenger side rail to complete the installation.



Detail B1: Lay out & sort components



Detail B2: Assemble top plates



Detail B7: Hardware installed



Detail B8: Installation complete

R1027
V01 - 8.26.22

ASSEMBLY (with drop brackets)

The steps below are based on a 4 door installation. Quantities will be slightly lower for 2 door vehicles.

This product includes accent plates that can be customized to the color of your choice or left as is.

If you would like to paint or powder coat the plate, do so before continuing.

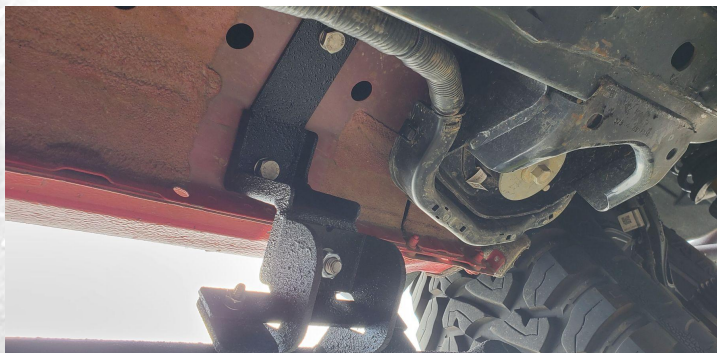
- C1.** Lay out the pieces and separate driver side vs passenger side. The majority of the tabs on the braces inside the rails point towards the front of the vehicle. The top plates are side specific and will have the Reaper logo towards the back of the vehicle.
- C2.** Assemble the top plates to the matching rails. Make sure the threaded studs drop through the tabs. Secure each side with (6) washers(C) and (6) nuts(E). Tighten with a 7/16" socket.
- C3.** Install the accent plates to the studs on the top plates. Secure at each side with (2) washers(C) and (2) nuts(E). Tighten with a 7/16" socket.
- C4.** To use the drop brackets, begin by installing each drop bracket at the required position on the side rail (see photo on Bill of Materials). Secure each bracket to the side rail using (1) M10 bolt(B), (2) M10 washers(D), (1) M10 nut(F), (2) 1/4" bolts(A), (4) 1/4" washers(C), and (2) 1/4" nuts(E). Leave the hardware loose enough for adjustment in the following steps. The bracket with (2) mounting holes (middle of 4 door, rear of 2 door) will only need M10 hardware at (1) location.
- C5.** With the help of a friend, lift the driver side rail up into position on the driver side of the vehicle. The drop brackets will each align to (2) mounting points on the vehicle. Use (6) M10 bolts(B) and (6) washers(D) to secure the brackets to the vehicle mounting points. Do not fully tighten yet.
- C6.** Now that all hardware is installed on this side, fully tighten the M10 hardware using a 17mm socket then fully tighten the 1/4" hardware using a 7/16" socket and a 7/16" wrench.
- C7.** Repeat the above steps for the passenger side rail to complete installation.



Detail C1: Lay out & sort components



Detail C2: Assemble top plates



Detail C6: Hardware installed



Detail C7: Installation complete

R1027
V01 - 8.26.22