



20+ JEEP GLADIATOR JT

REAR FENDER INSTALLATION INSTRUCTIONS

JTFNDRX1

Thanks for purchasing a set of Reaper Off-Road rear fenders for your JT. Our team has worked to ensure that this product is the premium in performance, quality, and fitment. We are proud to say that this product will enhance the look and off-road performance of your vehicle. We encourage you to read through the following steps, and check the included Bill of Materials before beginning. Please follow these steps to ensure that your installation goes as planned.

Our products are specifically designed with ease of installation in mind. However, if you are uncomfortable with the following instructions please seek professional assistance. Reaper Off-Road will not be held liable for harm or injury to yourself or your vehicle during installation or use of this product.



Recommended Tool List

- Plastic rivet removal tool
- Metric socket set
- Inch socket set
- Ratchet
- Open-end wrench set
- Hex key / Allen socket set
 - 5/32" hex socket (*preferred*)

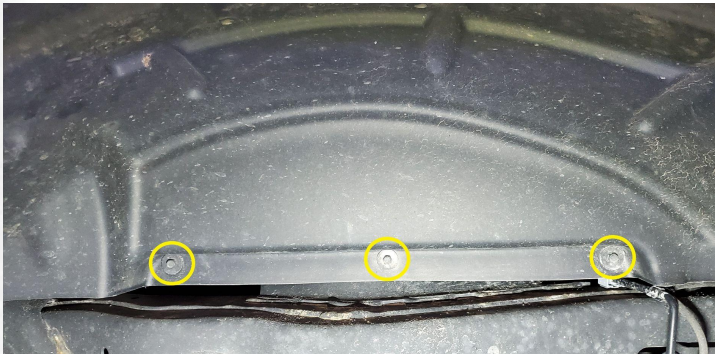


R1025
V01 - 2.11.22

DISASSEMBLY

*Steps may vary depending on trim level and optional equipment.
If installing liners and flares, we recommend installing the liners first.*

- A1.** Starting on the driver side, remove (3) 8mm hex head screws along the bottom edge of the liner.
- A2.** Remove the (5) plastic retaining clips around the fender liner using a trim removal tool.
- A3.** Push the liner up at each fender rivet around the outer edge to separate the pieces. The fender rivets do not need to be removed.
- A4.** Remove the plastic liner.
- A5.** The fender can be removed by prying with a trim removal tool while squeezing the tabs from the back side with needle nose pliers. Once the clip is through the hole, grab it with the pliers and pull it towards the tire to remove. There are a couple of tabs at the ends that will be more difficult to access the back side. Remove all the tabs you can access, then gently pull the fender off the vehicle. Any tabs remaining on the vehicle should be removed.
- A6.** Repeat the above steps for the passenger side.
- A7.** Clean the mounting surfaces, removing all dirt and debris.



Detail A1: Remove (3) screws



Detail A2: Remove push clips



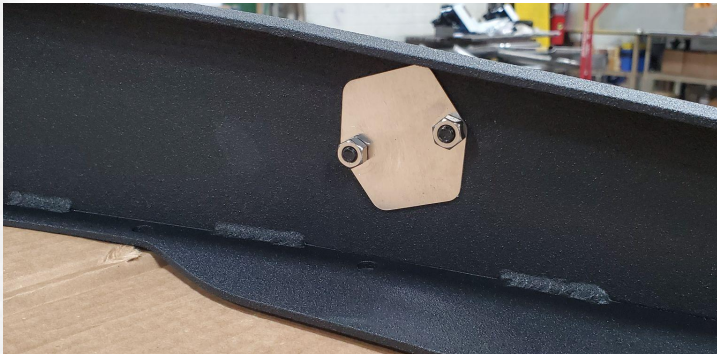
Detail A5: Remove clips and fender

R1025
V01 - 2.11.22

ASSEMBLY

These fenders include an accent plate that can be customized to the color of your choice or left as is. If you would like to paint or powder coat the plate, do so before continuing.

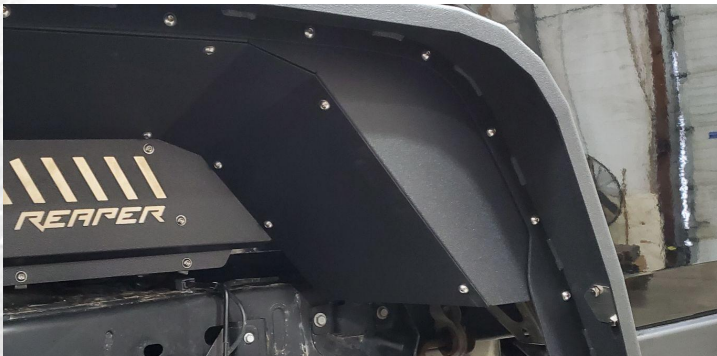
- B1.** Install the logo backing plates into each fender using (2) washers (B) and (2) nuts (D) on each side. Do not overtighten.
- B2.** Peel and stick the provided edge trim along the outside of the fender as shown. Avoid blocking the holes.
- B3.** Install each fender to the vehicle using the 1/4" bolts (A), washers (B), lock washers (C), and nuts (D). If you are installing to our fender liners, you will be connecting to the existing hardware on those panels. The lower mounting points will require reaching up and inside the body of the vehicle to attach the nuts. Install hardware at each mounting hole before tightening fully.
- B4.** Secure all hardware with a 5/32" hex and a 7/16" wrench.



Detail B1: Install backing plates



Detail B2: Install edge trim



Detail B3: Install fender and hardware

R1025
V01 - 2.11.22