



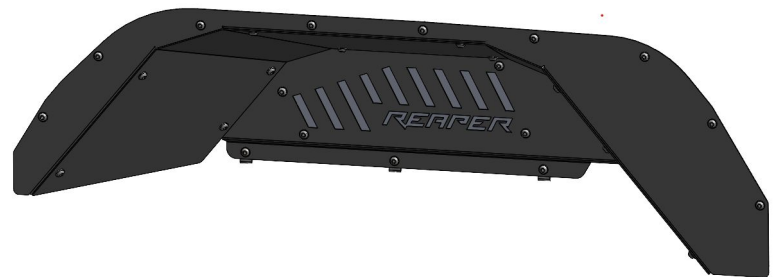
20+ JEEP GLADIATOR JT

REAR FENDER LINER INSTALLATION INSTRUCTIONS

JFL05

Thanks for purchasing a set of Reaper Off-Road rear fender liners for your JT. Our team has worked to ensure that this product is the premium in performance, quality, and fitment. We are proud to say that this product will enhance the look and off-road performance of your vehicle. We encourage you to read through the following steps, and check the included Bill of Materials before beginning. Please follow these steps to ensure that your installation goes as planned.

Our products are specifically designed with ease of installation in mind. However, if you are uncomfortable with the following instructions please seek professional assistance. Reaper Off-Road will not be held liable for harm or injury to yourself or your vehicle during installation or use of this product.



Recommended Tool List

- Plastic rivet removal tool
- Metric socket set
- Inch socket set
- Ratchet
- Open-end wrench set
- Hex key / Allen socket set
 - 5/32" hex socket (*preferred*)
- Cut-off wheel

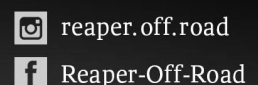


R1024
V01 - 2.10.22



Visit us online:
ReaperOffRoad.com

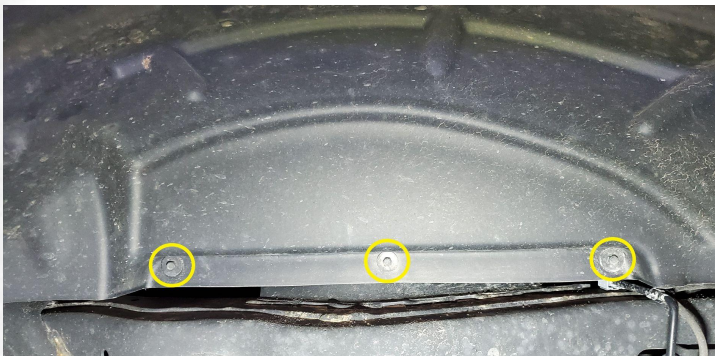
Call Us Toll-Free:
844-868-3022



DISASSEMBLY

Steps may vary depending on trim level and optional equipment.
If installing liners and flares, we recommend installing the liners first.

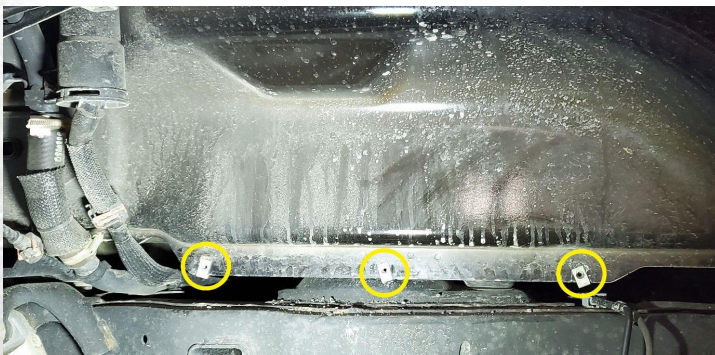
- A1.** Starting on the driver side, remove (3) 8mm hex head screws along the bottom edge of the liner.
- A2.** Remove the (5) plastic retaining clips around the fender liner using a trim removal tool.
- A3.** Push the liner up at each fender rivet around the outer edge to separate the pieces. The fender rivets do not need to be removed.
- A4.** Remove the plastic liner.
- A5.** Remove the (3) clip nuts that held the lower edge of the liner. You may need to use a pry bar or flat head screwdriver to release the OEM clips.
- A6.** The OEM fenders are compatible with our liners, but you will need to remove them for some trimming. The fenders can be removed by prying with a trim removal tool while squeezing the tabs from the back side with needle nose pliers. Once the clip is through the hole, grab it with the pliers and pull it towards the tire to remove. There are a couple of tabs at the ends that will be more difficult to access the back side. Remove all the tabs you can access, then gently pull the fender off the vehicle. Some tabs may break, but screws are provided for reinstalling where needed. Any tabs remaining on the vehicle should be removed.
- A7.** Repeat the above steps for the passenger side.
- A8.** Clean the mounting surfaces, removing all dirt and debris.



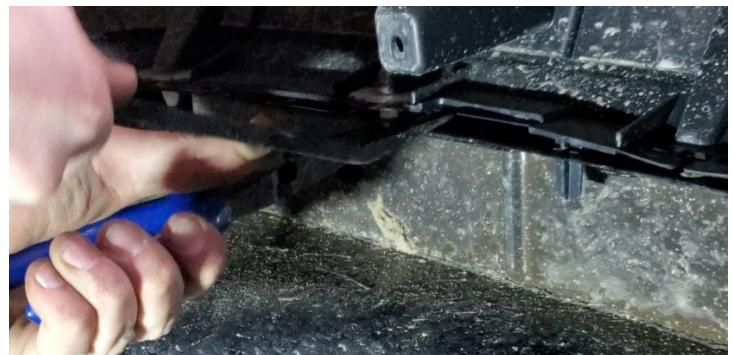
Detail A1: Remove (3) screws



Detail A2: Remove push clips



Detail A5: Remove factory clip nuts



Detail A6: Remove clips

R1024
V01 - 2.10.22

OEM FENDER TRIMMING

If you are planning to reinstall the OEM fenders some trimming is required.

- B1.** Set the liner piece on the back of the fender as a reference of where the liner will be. Mark the ends where the liner will be.
- B2.** Remove any push clips in the marked area by sliding them towards the "tire" edge.
- B3.** (2) Locating tabs on each fender must be cut off. Carefully cut flush with a pocket knife or cut-off wheel.
- B4.** Cut the inside ribs back to make clearance so that the new hardware can be installed. We recommend cutting these tabs back about an inch. A cut-off wheel works well.
- B5.** Outside of the marked area, you will reuse the OEM clips to mount the fender. Make sure that the clips there are in good condition and replace if needed.
- B6.** Reinstall the fenders by aligning the clips to the mounting holes and clicking in place. The remaining hardware will be installed in the next steps.



Detail B1: Mark off liner mounting area



Detail B3: Remove clips and cut off alignment tabs



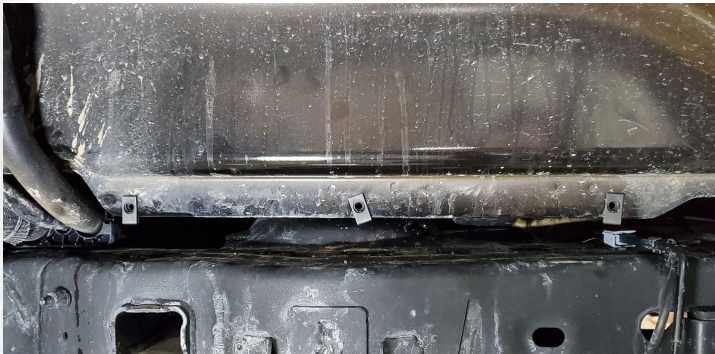
Detail B4: Trim ribs

R1024
V01 - 2.10.22

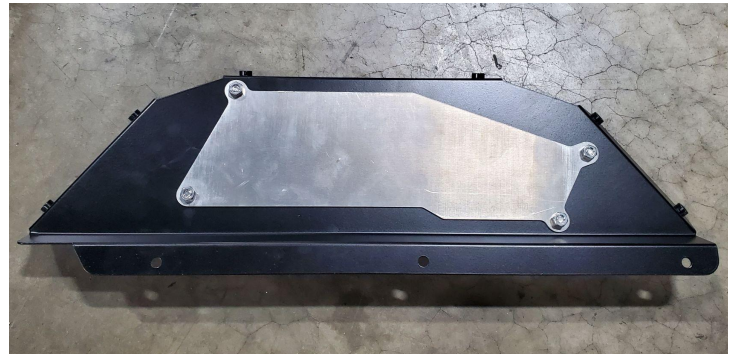
ASSEMBLY

These fender liners include an accent plate that can be customized to the color of your choice or left as is. If you would like to paint or powder coat the plate, do so before continuing.

- C1.** Starting on the driver side, install (3) of the provided 1/4" clip nuts (E) where the OEM ones were removed.
- C2.** Install logo backing plates behind each logo plate as shown below. Use (4) of the shorter length screws (B) with washers (C) and nuts (D) to secure. Tighten with 5/32" hex key and a 7/16" wrench.
- C3.** Install the logo panel to the vehicle using (3) screws (A) and (3) washers (C). Do not fully tighten yet.
- C4.** Install the front panel to the tub/fender using (9) 1/4" screws (A) and (9) washers (C). If you are installing our fenders, you should install the lower mounting points (outside of the liner area) first using the hardware from that kit, so that you are not positioning two panels at once.
- C5.** Install the top panel to the other panels using (12) screws (A) and (12) washers (C). Leave the screws loose until all screws are started.
- C6.** Adjust the panels to minimize gaps and tighten all screws with a 5/32" hex key, working through the panels in the same order they were installed.
- C7.** Repeat the above steps for the passenger side.



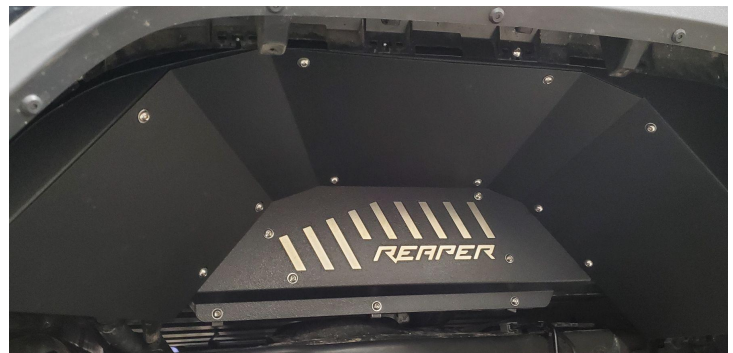
Detail C1: Install new clip nuts



Detail C2: Install backing plate



Detail C4: Install front panel (OEM fender shown)



Detail C6: Align panels and tighten hardware

R1024
V01 - 2.10.22