



20+ JEEP GLADIATOR JT

TAILGATE STORAGE BOX INSTALLATION INSTRUCTIONS

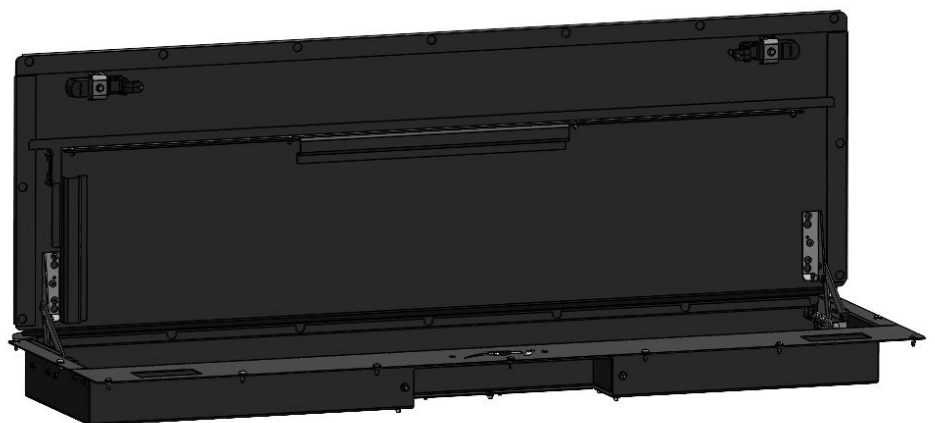
JTB01

Thanks for purchasing a Reaper Off-Road tailgate storage box for your 20+ Jeep Gladiator. Our team has worked to ensure that this product is the premium in performance, quality, and fitment. We are proud to say that this product will enhance the look and off-road performance of your vehicle. We encourage you to read through the following steps, and check the included Bill of Materials before beginning. Please follow these steps to ensure that your installation goes as planned.

Our products are specifically designed with ease of installation in mind. However, if you are uncomfortable with the following instructions please seek professional assistance. Reaper Off-Road will not be held liable for harm or injury to yourself or your vehicle during installation or use of this product.

Recommended Tool List

- Paint marker
- Cut-off tool
- Angle grinder
- Snap blade utility knife
- Plastic trim removal tool
- Torx T30 bit
- Inch socket set
- Ratchet
- Screwdriver set
- Hex key set
- Drill & drill bit set

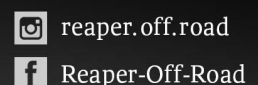


R1032
V01 - 5.30.23



Visit us online:
ReaperOffRoad.com

Call Us Toll-Free:
844-868-3022

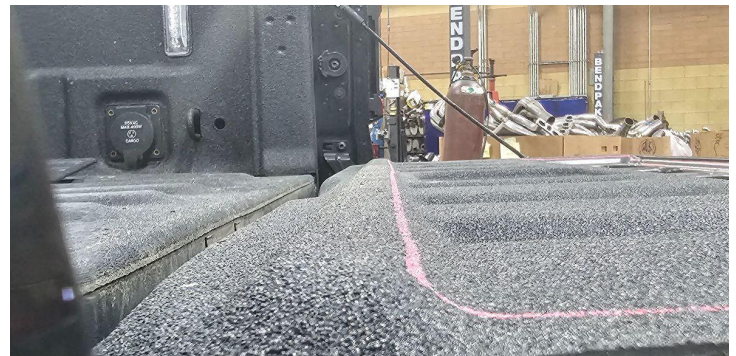
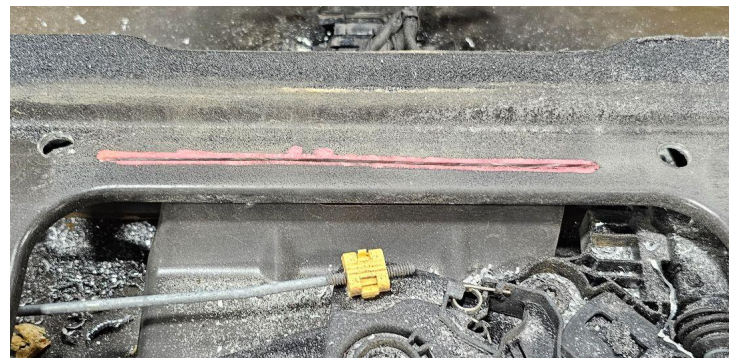


reaper.off.road

Reaper-Off-Road

DISASSEMBLY

- A1.** Open tailgate and locate the two access covers. Use a T30 Torx bit to remove (8) screws from the large cover and (4) screws from the small cover. Remove the covers.
- A2.** Inside the rear camera access window, unhook the (2) wire clips holding the wire harness in place.
- A3.** Use a paint marker to mark the path to cut. The pictures below show the cut profile. You will be following along existing contours. At the top side of the gate, follow the inside edge of the stamping. At the bottom end of the tailgate, mark the inner edge of the raised stamping. At the sides, follow the stamping of the latch access window - use a straight edge to extend the line towards the bottom of the tailgate.
- A4.** Use a cutoff tool to cut along the marked path. Safety glasses are required during this step. A facemask is recommended, especially if your tailgate has bedliner. Be sure to hold your cutoff tool at the proper height so that you are only cutting the tailgate panel and avoiding the wiring and mechanisms below.
- A5.** After this cut is complete, the tailgate panel will still be held in place by bracing within the tailgate. Do not pull or pry anything or else you will risk damaging the back skin of the tailgate. Mark another line through the center of the tailgate so that the bottom half of the panel can be removed. Cut along the line and remove the bottom section.
- A6.** The upper section of the panel will still be held in by the S-shaped brace below as well as being spot welded to the handle/latch bracket. Look or feel for the dimples from the spot welds in this area. Mark a line offset slightly towards the top of the tailgate. Cut along the line to free up the connection to the latch bracket.

*Detail A3a: Mark cut path**Detail A3b: Mark cut path**Detail A5: Cut to remove bottom of panel**Detail A7: Cut upper section free from latch bracket*

DISASSEMBLY (continued)

- A7.** You will now be able to cut the foam panel adhesive that holds the S-shaped brace to the back skin of the tailgate. We recommend using a shop vac to clear debris before cutting. Use a snap blade utility knife to cut along the foam. There are a few plastic pins along the cut path, used to align the emblem on the back of the tailgate. Be sure to avoid these pins and any wiring in the area. It is not necessary to remove all of the foam - it will not interfere with the installation of the storage box.
- A8.** Once the S-brace is cut free, you will need to undo any plastic wire clips that are connected to the brace. Disconnect plugs as needed to free up the brace. Remove the S-brace and reconnect all plugs.
- A9.** Mark and cut down the bottom leg of the latch bracket. Use the lowered profile at the center as a guide.
- A10.** Use an angle grinder or file to clean up all sharp edges.
- A11.** Use a shop vac to clear all debris.



Detail A7: Snap blade knife



Detail A8: Disconnect harness clips



Detail A9: Trim latch bracket



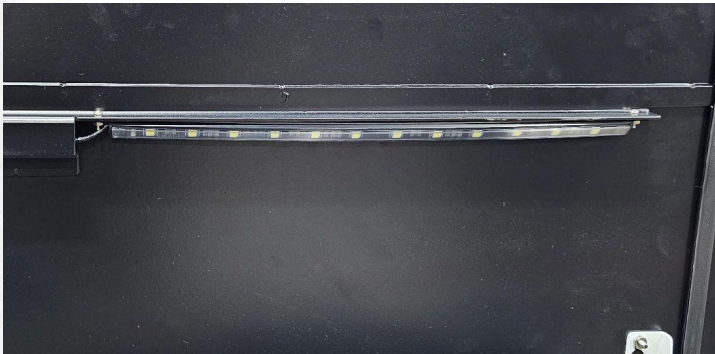
Detail A11: Clean & prep for installation

R1032
V01 - 5.30.23

ASSEMBLY

This product includes an accent plate that can be customized to the color of your choice or left as is.
The plate is not accessible after installation, if you would like to customize please do so ahead of installation.

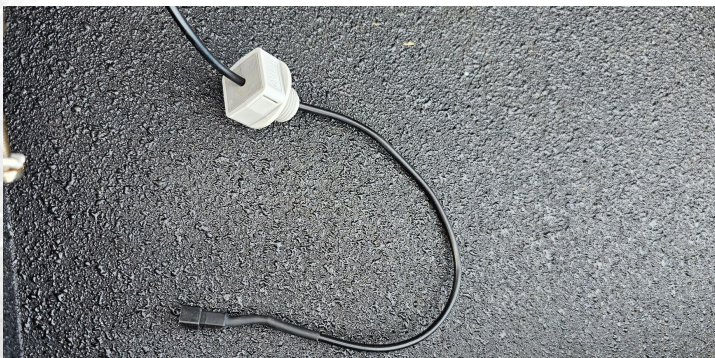
- B1.** Install accent plate behind logo, using (2) 1/4" nuts(F). Secure with a 7/16" socket.
- B2.** Begin installing the light kit into the storage box lid. The light strips are pre-wired together. The light strip at the end of the wiring will be mounted at the right side of the lid. Feed the light through the tunnel left-to-right. Peel back about 1" of each adhesive strip, do not remove entirely yet. Use (2) #4 screws(A) and (2) #4 nuts(E) to secure. Before tightening, fully remove the paper from the adhesive strips and press the light in place. Tighten #4 hardware with a #1 Phillips screwdriver and 1/4" wrench.
- B3.** Install the right side light strip following the same process as above. Use (2) #4 screws(A) and (2) #4 nuts(E) to secure. Tuck the excess wiring into the center tunnel on the lid.
- B4.** Install the wired magnetic latch to its mount at the left side of the lid. Peel the paper off the adhesive strip. Feed the wire through the window in the mount and connect it to the light wiring harness. Secure the magnetic latch using (2) #6 screws(B). Tighten with a #2 Phillips screwdriver.
- B5.** Feed the wiring harness down through the left side wire tunnel. Assemble the cable gland grommet(H) around the wire, approximately 4"-5" away from the wire tunnel. Assemble the cable gland housing(G) around the grommet, with the threaded end towards the plug end. Install seal around the cable gland threads then install into the hole in the back wall of the storage box. At the outside of the box, secure the cable gland with the supplied plastic nut. Make sure there is enough slack in the wiring for the lid to open without stressing the wiring.
- B6.** Install the lower magnetic latch into the left side of the storage box. Peel the paper off the adhesive strip. Secure the magnetic latch using (2) #6 screws(B). Tighten with a #2 Phillips screwdriver.



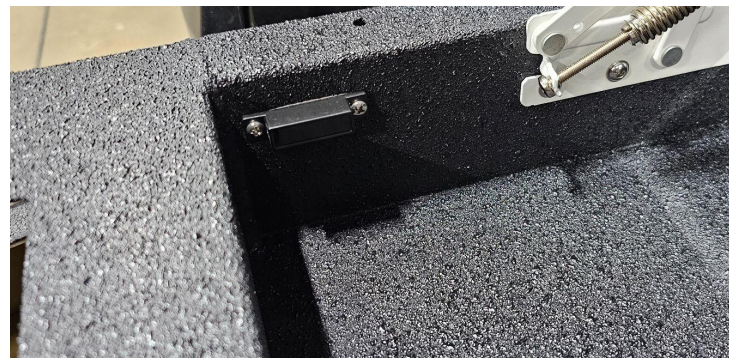
Detail B2: Right side light installed



Detail B4: Left side light and magnetic latch installed



Detail B5: Cable gland installed



Detail B6: Magnetic latch installed inside box

R1032
V01 - 5.30.23

ASSEMBLY (continued)

- B7.** Install the (2) latches to the lid. The latch will install through the top side of the lid, with the button side towards the outside edge. Be sure to use the seal around the latch body, at the top side of the lid. Secure the latch with the supplied clip and screw. Check and adjust the clamping arm of the latch for a secure hold. Tighten the jam nut when the positioning is correct.
- B8.** Install the power wire harness (20' harness) to the vehicle's battery. The wiring will run down the inside of the passenger side fender liner and along the top of the right side of the frame. Follow the existing wire looms and secure wiring as needed. Continue running the wiring along the top of the right side, until you reach the rear crossmember above the spare tire. Continue above that crossmember to the plastic cover at the center. From the top side, with tailgate open, depress the tab at the right side of the cover and remove the cover. Find a location clear of plugs and wiring, and drill a 1/2" hole. Press the plastic cover back into place and route the wiring through. Continue the wiring into the large opening at the bottom of the tailgate. All wiring should be double checked and secured fully once the box is fully installed.
- B9.** Set the tailgate box on the tailgate and connect the wiring harness. The harness connection will be hidden inside the tailgate in the next step. Make sure the lighting is functioning correctly before continuing. If you wired to an auxiliary switch, make sure that switch is set to ON.
- B10.** Drop the box into the tailgate. Align the front (top) edge to the inside of the ridge on the plastic trim at the top of the tailgate. Center the box left/right by aligning between the latch openings.
- B11.** Mark & pre-drill the hole locations to mount the box. Use a #21 (.159") drill bit. You can leave the box in place and drill through if you would like - just be sure to avoid damaging the box as you drill.
- B12.** Secure the box using (18) #10 self tapping screws(C) and (18) #10 washers(D). Use a #2 Phillips screwdriver to tighten.

*Detail B7: Latch installed**Detail B8a: Route wiring along top of frame**Detail B8b: Drill hole in plastic cover**Detail B10: Align box inside of plastic rib*