



18+ JEEP WRANGLER JL/JLU 20+ JEEP GLADIATOR JT

SIDE RAILS INSTALLATION INSTRUCTIONS

JSR01, JSR03, JSR04

Thanks for purchasing a set of Reaper Off-Road side rails for your Gladiator. Our team has worked to ensure that this product is the premium in performance, quality, and fitment. We are proud to say that this product will enhance the look and off-road performance of your vehicle. We encourage you to read through the following steps, and check the included Bill of Materials before beginning. Please follow these steps to ensure that your installation goes as planned.

Our products are specifically designed with ease of installation in mind. However, if you are uncomfortable with the following instructions please seek professional assistance. Reaper Off-Road will not be held liable for harm or injury to yourself or your vehicle during installation or use of this product.

Recommended Tool List

- Socket set - Inch
- Socket set - Metric
- Ratchet
- Wrench set - Inch





R1029
V01 - 3.20.23



Visit us online:
ReaperOffRoad.com

Call Us Toll-Free:
844-868-3022

 [reaper.off.road](https://www.instagram.com/reaper.off.road)
 [Reaper-Off-Road](https://www.facebook.com/Reaper-Off-Road)

DISASSEMBLY

Steps may vary depending on trim level and optional equipment.

- A1.** If equipped, unbolt factory rails or steps. Use a 13mm socket to remove (1) bolt at each mounting point. Use a 10mm socket to remove (2) nuts at each mounting point.
- A2.** Remove the rails from the vehicle and set aside.

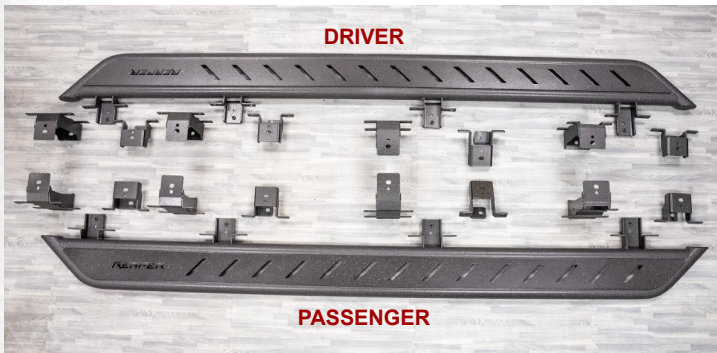
ASSEMBLY (without drop brackets)

The steps below are based on a Gladiator JT installation. Quantities will be slightly lower for 4 door Wrangler JLU & 2 door Wrangler JL

This product includes accent plates that can be customized to the color of your choice or left as is.

If you would like to paint or powder coat the plate, do so before continuing.

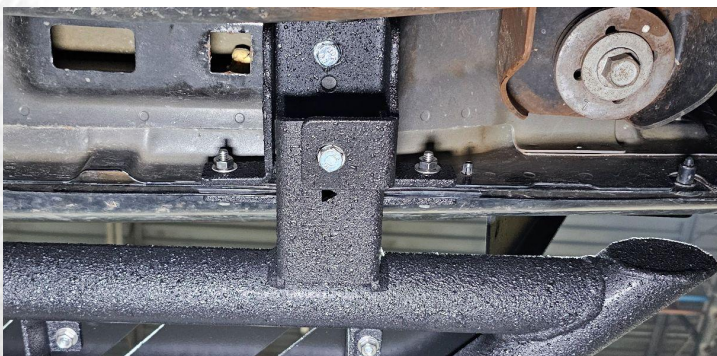
- B1.** Lay out the pieces and separate driver side vs passenger side. The mounting brackets on the rails have arrows that point towards the front of the vehicle. The top plates are side specific and will have the Reaper logo towards the back of the vehicle. This kit features standard mounting height brackets and lowered height mounting brackets.
- B2.** Assemble the top plates to the matching rails. Make sure the threaded studs drop through the tabs. Secure each side with (1) washer(C) and (1) nut(E) at each tab location. Tighten with a 7/16" socket.
- B3.** Install the accent plates to the studs on the top plates. Secure at each side with (2) washers(C) and (2) nuts(E). Tighten with a 7/16" socket.
- B4.** Install the standard height mounting brackets in the correct order. Each bracket has a shape to indicate it's position relative to the front of the vehicle - (#1 - circle, #2 - triangle, #3 - square, #4 - pentagon). You will have 2 of each needed for your vehicle application and they will fit both left and right sides. Secure each bracket with (1) 8mm bolt(B) and (1) washer(D). Do not fully tighten the hardware yet - leave just loose enough for minor adjustments.
- B5.** With the help of a friend, lift the driver side rail up into position on the driver side of the vehicle. The rail brackets will slide into the openings of the mounting brackets. Secure the rail to the mounts using (1) 8 mm bolt(B) and (1) washer(D) at each mounting point. Snug the hardware, but do not fully tighten yet.
- B6.** Secure the brackets to the pinch weld by installing (2) 1/4" screws(A), (4) washers(C), and (2) nuts(E) at each mounting point. Do not fully tighten yet. If you have any trouble installing the hardware, lift up on the rail to support its weight. Loosen nearby hardware if needed.
- B7.** Now that all hardware is installed on this side, fully tighten the 8mm hardware using a 13mm socket then fully tighten the 1/4" hardware using a 7/16" socket and a 7/16" wrench.
- B8.** Repeat the above steps for the passenger side rail to complete the installation.



Detail B3: Lay out & sort components



Detail B3: Assemble top plates and accent plates



Detail B7: Hardware installed



Detail B8: Installation complete

R1029
V01 - 3.20.23

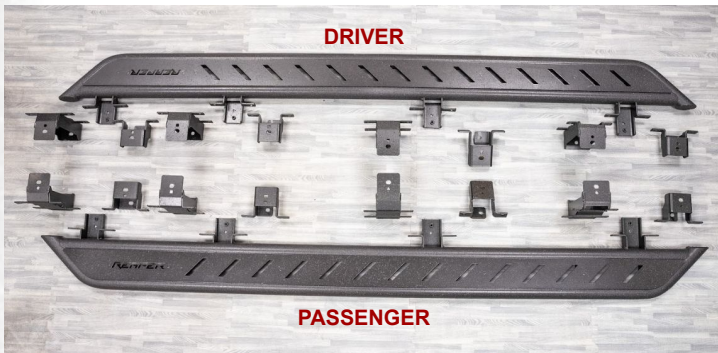
ASSEMBLY (with drop brackets)

The steps below are based on a Gladiator JT installation. Quantities will be slightly lower for 4 door Wrangler JLU & 2 door Wrangler JL

This product includes accent plates that can be customized to the color of your choice or left as is.

If you would like to paint or powder coat the plate, do so before continuing.

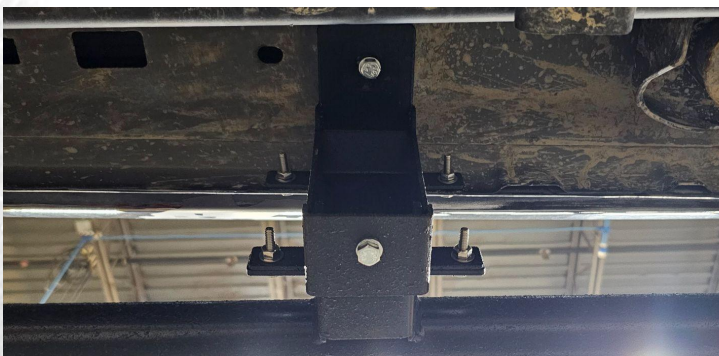
- C1.** Lay out the pieces and separate driver side vs passenger side. The mounting brackets on the rails have arrows that point towards the front of the vehicle. The top plates are side specific and will have the Reaper logo towards the back of the vehicle. This kit features standard mounting height brackets and lowered height mounting brackets.
- C2.** Assemble the top plates to the matching rails. Make sure the threaded studs drop through the tabs. Secure each side with (1) washer(C) and (1) nut(E) at each tab location. Tighten with a 7/16" socket.
- C3.** Install the accent plates to the studs on the top plates. Secure at each side with (2) washers(C) and (2) nuts(E). Tighten with a 7/16" socket.
- C4.** Install the drop height mounting brackets in the correct order. Each bracket has a shape to indicate it's position relative to the front of the vehicle - (#1 - circle, #2 - triangle, #3 - square, #4 - pentagon). You will have 2 of each needed for your vehicle application and they will fit both left and right sides. Secure each bracket with (1) 8mm bolt(B), (1) 8mm washer(D), (2) 1/4" screws(A), (4) washers(C), and (2) nuts(E). Do not fully tighten the hardware yet - leave just loose enough for minor adjustments.
- C5.** With the help of a friend, lift the driver side rail up into position on the driver side of the vehicle. The rail brackets will slide into the openings of the mounting brackets. Secure the rail to the mounts using (1) 8 mm bolt(B), (1) washer(D), (2) 1/4" screws(A), (4) washers(C), and (2) nuts(E) at each mounting point. Do not fully tighten yet. If you have any trouble installing the hardware, lift up on the rail to support its weight. Loosen nearby hardware if needed.
- C6.** Now that all hardware is installed on this side, fully tighten the 8mm hardware using a 13mm socket then fully tighten the 1/4" hardware using a 7/16" socket and a 7/16" wrench.
- C7.** Repeat the above steps for the passenger side rail to complete the installation.



Detail B3: Lay out & sort components



Detail B3: Assemble top plates and accent plates



Detail B7: Hardware installed



Detail B8: Installation complete