



18+ JEEP WRANGLER JL/JLU

REAR BUMPER INSTALLATION INSTRUCTIONS

JLRBX1B, JLRBX2B, JLRBSSX1B, JLRBSSX2B

Thanks for purchasing a Reaper Off-Road bumper for your 18+ Jeep Wrangler JL. Our team has worked to ensure that this product is the premium in performance, quality, and fitment. We are proud to say that this product will enhance the look and off-road performance of your vehicle. We encourage you to read through the following steps, and check the included Bill of Materials before beginning. Please follow these steps to ensure that your installation goes as planned.

Our products are specifically designed with ease of installation in mind. However, if you are uncomfortable with the following instructions please seek professional assistance. Reaper Off-Road will not be held liable for harm or injury to yourself or your vehicle during installation or use of this product.

Recommended Tool List

- Metric socket set
- Inch socket set
- Ratchet
- Breaker bar or long handle ratchet
- Blanket or towel





R1035
V01 - 5.28.24



Visit us online:
ReaperOffRoad.com

Call Us Toll-Free:
844-868-3022

 [reaper.off.road](https://www.instagram.com/reaper.off.road)
 [Reaper-Off-Road](https://www.facebook.com/Reaper-Off-Road)

DISASSEMBLY

Steps may vary depending on trim level and optional equipment.

- A1.** Starting at the middle of the rear bumper, use a 10mm socket to remove (2) screws along the underside that hold the bumper to metal brackets (if equipped).
- A2.** Unplug the sensor harness or license plate light harness at the driver side. You may need to use a screwdriver to unlock the plug.
- A3.** Remove the mud guards (if equipped) - (3) screws on each side - 8mm socket.
- A4.** Use a 16mm socket to remove the S-shaped bracket at either end by removing (4) bolts - (2) to the bumper and (2) to the frame. Repeat for other side.
- A5.** Use a 16mm deep socket to remove (2) nuts at each side holding the L-brackets to the bumper. The bumper will now be loose from the vehicle.
- A6.** Remove the factory bumper from the vehicle. If you have a spare tire you may need to open the rear gate to remove the bumper.
- A7.** Use a 21mm socket to remove (4) bolts from the tow hook and L-bracket at the driver side.
- A8.** Use a 21mm socket to remove (2) bolts from the L-bracket from the frame at the passenger side.
- A9.** Remove the bracket from the center of the frame, if equipped. If you have a hitch receiver you can leave that installed.



Detail A1: Remove screws under center of bumper



Detail A2: Unplug wire harness



Detail A4: Remove the S-shaped bracket



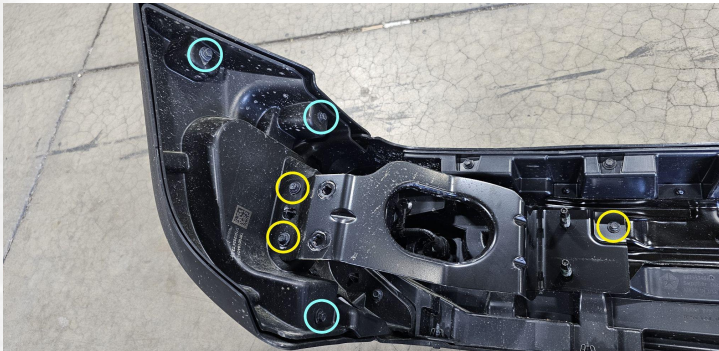
Detail A5: Remove the (2) nuts from each side

R1035
V01 - 5.28.24

DISASSEMBLY (continued)

Steps may vary depending on trim level and optional equipment.

- A10.** For vehicles with rear parking sensors, you will need to remove the wire harness from the factory bumper. Begin by using a 7mm socket to remove (3) screws (circled in yellow below) at each of the metal mounting brackets.
- A11.** Use a 7mm socket to remove (3) screws (circled in blue below) holding the outer bumper trim at each side.
- A12.** Remove the (3) white plastic clips at each side. Use a slotted screwdriver to press in the center tab to release the clips.
- A13.** Use a 7mm socket to remove the (2) screws at the outside of each corner extension.
- A14.** Use a 7mm socket to remove the (4) screws at the center metal bracket.
- A15.** Use a 7mm socket to remove the remaining screws holding the bumper layers together.
- A16.** Unplug the wiring harness at each sensor connection and at the license plate light.
- A17.** Remove the inner liner from the outer bumper.
- A18.** Use trim tools to free the harness from each retaining clip location.
- A19.** Remove the (4) sensors from the factory bumper by spreading the retaining clips to release. Make note of position for reinstallation.



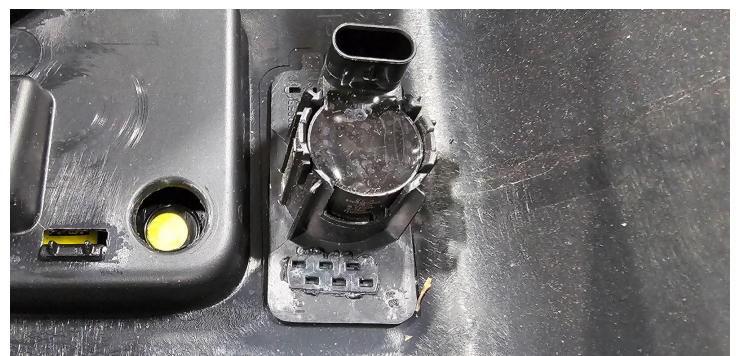
Detail A10/A11: Remove screws



Detail A12: Remove plastic clips



Detail A13: Remove screws



Detail A19: Remove sensors from mounts

R1035
V01 - 5.28.24

ASSEMBLY

Steps may vary depending on trim level and optional equipment.

- B1.** If you would like to customize the color of your accent plates, it should be done before installation.
- B2.** Install the accent plates behind the Reaper logos using the provided 1/4" washers(C), nuts(E) and a 7/16" socket.
- B3.** Install (4) sensor mounts(F) into the bumper by inserting from the outside face. Install sensors into each mount from the inside of the bumper. Be sure to properly align the sensors into each mount - they will only fit one way.
Plugs(G) are provided for vehicles that are not equipped with rear sensors. Install from outside face of bumper.
- B4.** If you purchased a bumper with the fog light option, install the fog light brackets loosely using the provided 1/4" washers(C), nuts(E) and a 7/16" socket. Install your LED pods onto the brackets (pods and hardware not included). Position lights as needed and tighten all hardware.
- B5.** Install the license plate bracket onto the bumper using the provided hardware(A,C,E). This is easier to do before the bumper is on the vehicle, but it can be done after install as well. This bracket is not needed if you have relocated the rear license plate.
- B6.** Install the bumper onto the frame rails of the vehicle. It will help to have a friend help with holding the bumper while you align the mounting holes to the frame.
- B7.** Install (2) 14mm washers(D) and (2) bolts(B) per side. Use a 22mm socket to secure.
- B8.** Install sensor wire harness by feeding it over the frame rails. Connect at each sensor connection and at main harness connection at the driver's side. Be sure to lock each connection using the sliding lock. Use zip ties to secure excess wiring.



Detail B2: Install accent plates



Detail B3: Install sensor mounts and sensors



Detail B7: Install mount hardware



Completed Install

R1035
V01 - 5.28.24